

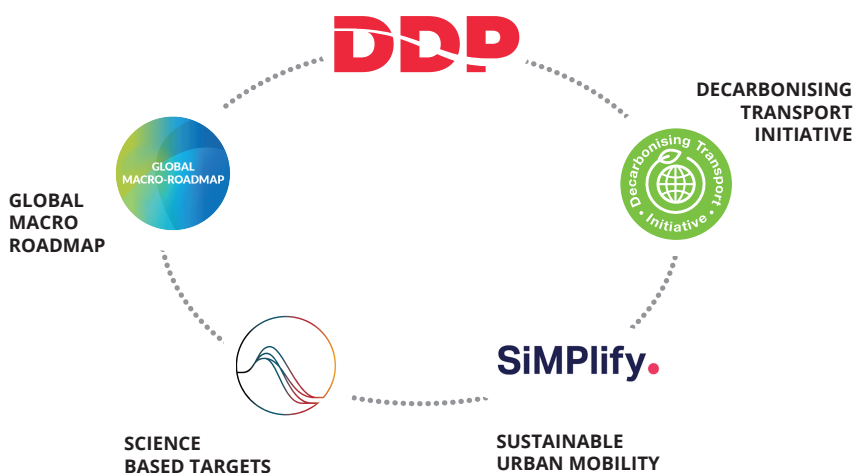
TRANSPORT DECARBONIZATION TOOLBOX

SUPPORTING COUNTRIES, CITIES AND COMPANIES TOWARDS CARBON NEUTRALITY



Since COP23 in Bonn and Movin'On Summit 2018 in Montreal, five key international initiatives are working in cooperation to inform policy-makers on specific aspects related to the sustainable transformation of the transport sector.

DEEP DECARBONIZATION PATHWAYS



THE TRANSPORT DECARBONIZATION TOOLBOX

- Provides tools to support transport stakeholders to identify detailed and implementable transport-related measures in order to contribute to limiting the global warming “well below 2°C” as agreed in the Paris Agreement and aligned with national and sector-specific objectives.
- Supports an inclusive dialogue between countries, cities, regions, companies, citizens and experts in order to define relevant and implementable low emissions objectives and associated strategies.

SUPPORT IMPLEMENTATION

The existing tools provide relevant inputs to develop detailed short-term climate action plans for transport, increase the transport climate ambition for countries, cities and companies and inform the revision of Nationally Determined Contributions (NDCs).

Different tools analyze the drivers of sustainable mobility to understand the policy levers required, test and compare policy packages to explore different long-term low emission pathways, and assess emission reduction targets and other key transport-related indicators.



Analyse sustainable mobility to understand drivers of transformation



Assess emission reduction targets and offer key transport-related indicators



Compare long-term scenarios and strategies



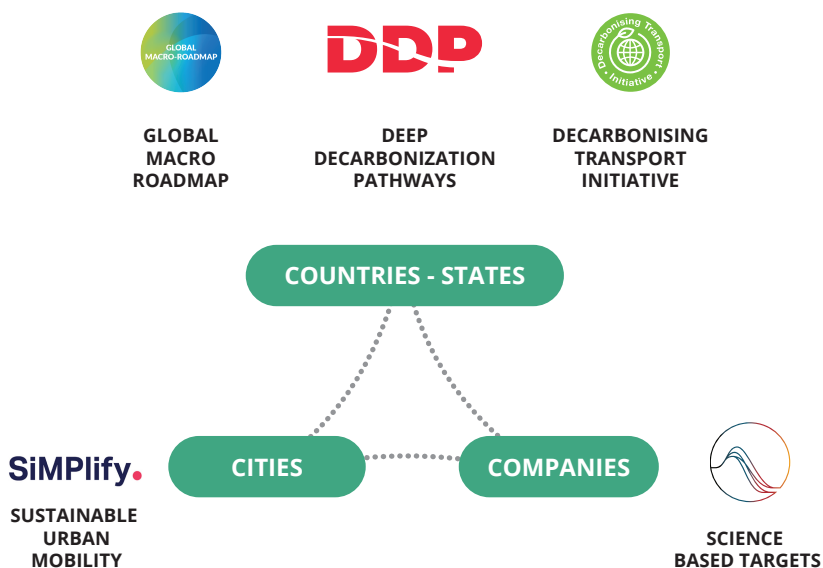
IMPLEMENTATION RESULTS

- **DDP tool** for passenger transport supported Mexican research teams in their assessment of the conditions to alleviate the time and monetary burden of constrained mobility for households while increasing mobility for the categories of population with lowest mobility rates and reducing the emissions per capita by 50% between 2010 and 2050.
- Engagement with **SiMPLify** has generated Public-Private Partnerships to advance electric mobility in Hamburg; a new bike lane was rolled out in Campinas (Brazil); a school-bus scheme, 15 park and ride facilities, flexible working hours and traffic management flow resulted in lower emissions and congestion in Bangkok. After a trial in Indore, right turn filtering is now promoted in India.

SUPPORT MULTI-STAKEHOLDER DIALOGUES

The existing tools are tailored to different policy and decision makers working in national or local governments, in companies or in non-profit organizations and are able to integrate context-specific priorities.

Countries, regions, cities and companies have different action levers. Coordination among them is key to enhancing future ambition and the different tools support this inclusive dialogue and engagement at different scales.



IMPLEMENTATION RESULTS

- The **Science Based Targets** initiative has facilitated a couple of training webinars for companies interested in using the tool to model a science-based target for transport operations, and will continue to do so.
- Morocco was the first country to adapt the **Global Macro Roadmap** to a national context by developing a Moroccan Roadmap, as a legacy from the COP22 presidency for the transport sector. An Indian adaptation has just been launched and will be a major input for India's NDCs Commission.
- The **Decarbonising Transport initiative** through its urban transport model, analysed transport decarbonisation strategies in Indian cities to help Indian stakeholders identify cost-efficient pathways to mitigate CO₂ emissions from passenger transport. A special emphasis is put on the evaluation of investment strategies for public transport and non-motorised transport infrastructures.

The **Deep Decarbonization Pathways** initiative led by the Institute for Sustainable Development and International Relations (IDDRI) supports the definition of country-driven pathways for transport, aimed to inform the design of low-emission development strategies and the revision of NDCs.



www.ddpinitiative.org

Contact person: Henri Waisman (henri.waisman@iddri.org)



The International Transport Forum's **Decarbonising Transport initiative** promotes carbon-neutral mobility to help stop climate change. It provides decision makers with tools to select CO₂ mitigation measures that deliver on their climate commitments and helps governments and industry translate climate ambitions into actions.



www.itf-oecd.org/DT

Contact person: Jari Kauppila (jari.kauppila@itf-oecd.org)



The **Global Macro Roadmap** for Transport Decarbonization, led by the Paris Process on Mobility and Climate (PPMC) proposes an overarching framework for action on transport and climate change to set the course towards a net-zero emission sector according to the Paris Agreement, along eight priority areas.



www.ppmc-transport.org/

Contact person: Patrick Oliva (m.patrick.oliva@gmail.com)

SiMPLify. Sustainable Urban Mobility



SiMPLify is a global city-business collaboration to foster innovation for easy, safe and clean urban mobility systems for all. It is a data-driven, multi-stakeholder approach showing how cities and businesses can collaborate better to develop sustainable mobility, leading to accelerated implementation of tailor-made solutions in an integrated, multimodal, and comprehensive way.



www.wbcd.org/SiMPLify

Contact person: Irene Martinetti (martinetti@wbcd.org)



SCIENCE
BASED
TARGETS



The **Science-Based Targets** initiative, a collaboration between the Carbon Disclosure Project (CDP), the World Resources Institute (WRI), the World Wide Fund for Nature (WWF) and the United Nations Global Compact (UNGC), supports early and ambitious climate action from the private sector through promoting emission reduction targets setting against Paris-compatible decarbonisation pathways.



www.sciencebasedtargets.org/

Contact person: Fernando Rangel Vilasana (frangel@wwfmex.org)