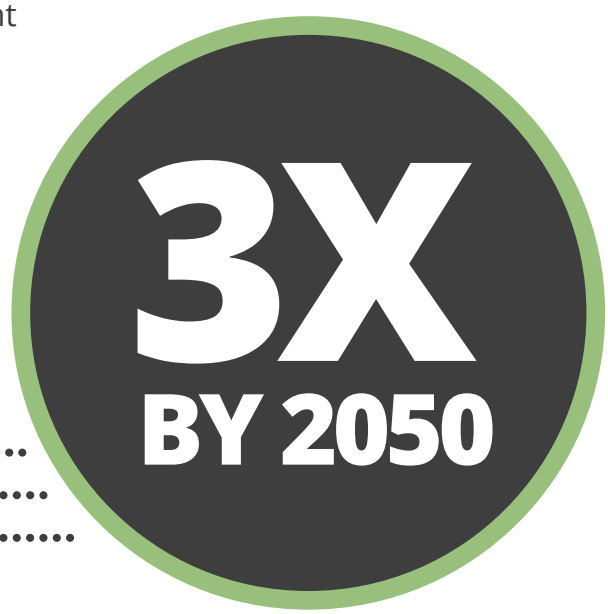


FORESTS ARE KEY TO GLOBAL SUSTAINABILITY

INCREASING DEMANDS ON THE WORLD'S FORESTS

for wood, fiber, fuel, food and more ecosystem services:

Annual demand for wood alone is **EXPECTED TO TRIPLE BY 2050** to more than 10 billion m³ - equivalent to 4 million Olympic size swimming pools full of wood each year.



TO MEET DEMAND IN A RESPONSIBLE WAY FORESTS MUST BE SUSTAINABLY MANAGED AND USED

THERE ARE DIFFERENT FOREST TYPES, from natural forests to plantations. All are critically important and complement each other in meeting different needs. Managing these forest types responsibly means reducing climate change risks, providing critical ecosystem services that make life on earth possible, generating industrial wood and fiber for a wide range of traditional products and innovative bio-product solutions, providing food and renewable energy, sustaining livelihoods and delivering recreational benefits.

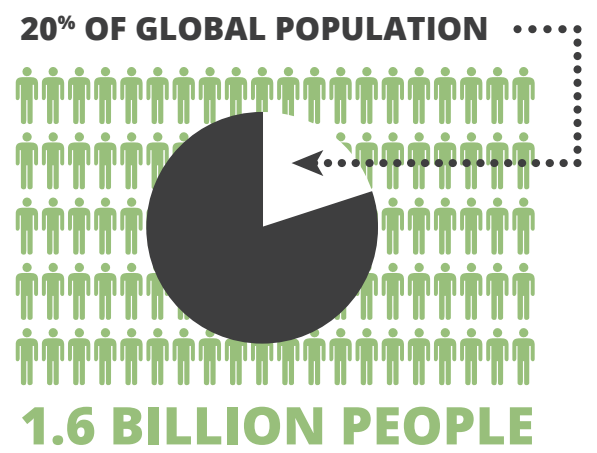


BENEFITS OF SUSTAINABLE FOREST MANAGEMENT FOR PEOPLE & PLANET

SOCIAL

The forest products industry employs **14 MILLION PEOPLE GLOBALLY** and forests directly affect the livelihoods of **20% OF THE WORLD'S POPULATION**.

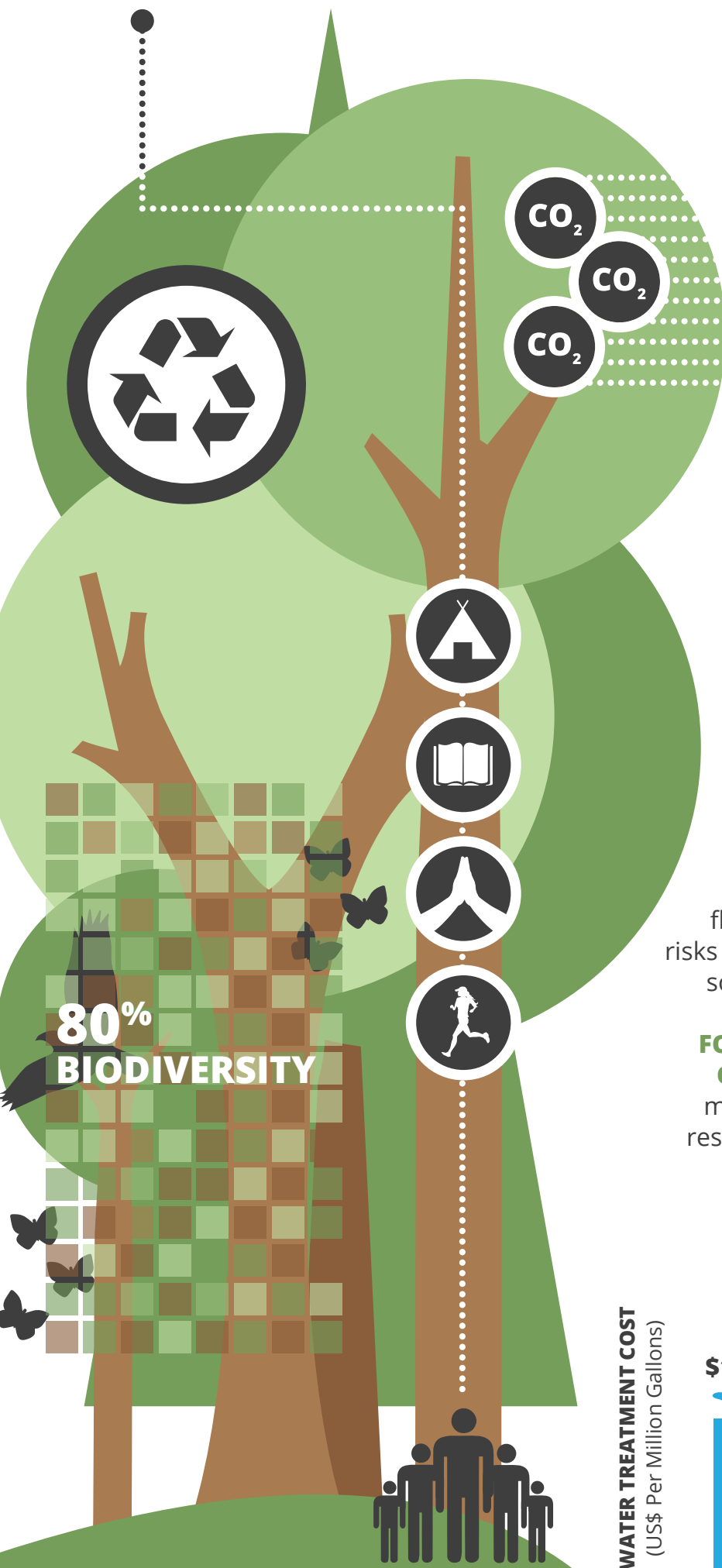
We all depend on the goods and services forests generate and benefit from the educational, recreational, cultural and spiritual values forests provide.



PRODUCTS & ENERGY

Sustainably managed forests provide raw material for a broad variety of every day goods, be that paper or packaging, personal care, pharmaceuticals or construction material. **THESE ARE RENEWABLE & WIDELY RECYCLABLE.**

Energy from wood is the single most important source of **RENEWABLE ENERGY**, representing **9% OF THE TOTAL PRIMARY ENERGY SUPPLY** worldwide.



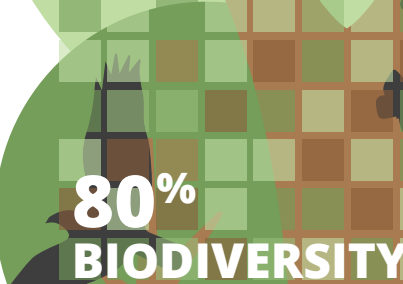
CARBON STORAGE

Sustainable forest management and responsible use of forest products present the most effective and cost-competitive **NATURAL CARBON CAPTURE and STORAGE SYSTEM.**

Global forest carbon stocks are estimated to be **861 BILLION TONNES** or 27x the world's annual carbon emissions from fossil fuels. Wood products store carbon at a rate of 189 million tonnes per year and growing. That's equivalent to **REMOVING 693 MILLION TONNES** of CO₂ from the atmosphere annually.

BIODIVERSITY

Forests are home to **80% of terrestrial biodiversity**. As part of well-planned landscapes, managed forests play a key role in **REDUCING PRESSURES** on natural forests, connect fragmented ecosystems to **INTACT LAND USE MOSAICS** and make a meaningful contribution to **CONSERVING BIODIVERSITY**, ecosystem services and human well-being.

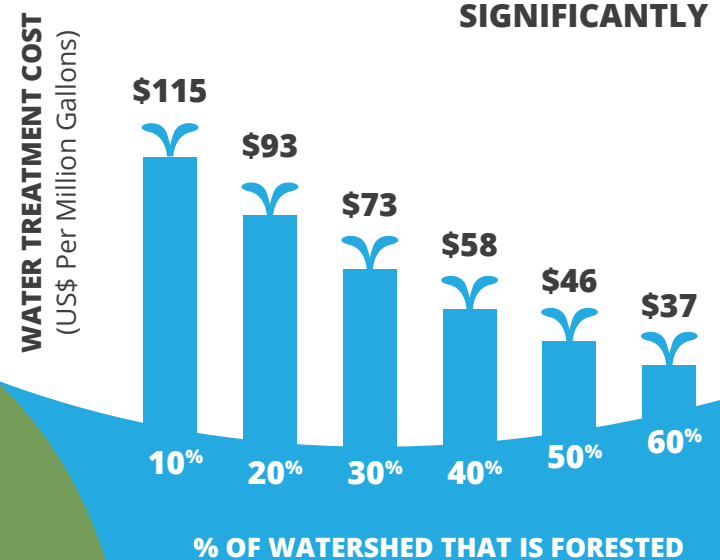


WATER

Forests provide multiple water ecosystem services, by controlling floods and droughts, reducing erosion risks and protecting watersheds that are a source for the water we drink and use.

FORESTED CATCHMENTS SUPPLY 75% OF FRESH WATER. Forests and forest management practices help to protect, restore, and sustain water quality, water flows, and watershed health.

FORESTED WATERSHEDS REDUCE THE COST OF WATER TREATMENT SIGNIFICANTLY



SOURCES AND REFERENCES

FAO; Global Partnership on Forest Landscape Restoration; IPCC AR 4; Pan et al. 2011; Pöyry; United States Department of Agriculture & Forest Service; The Brazilian Forest Dialogue; WBCSD; World Resources Institute; WWF International; PwC; Mach et al. 2011; The Trust for Public Land; American Water Works Association; United Nations